



The Essentials of Numeracy

A new approach to making the UK numerate

Andy Haldane

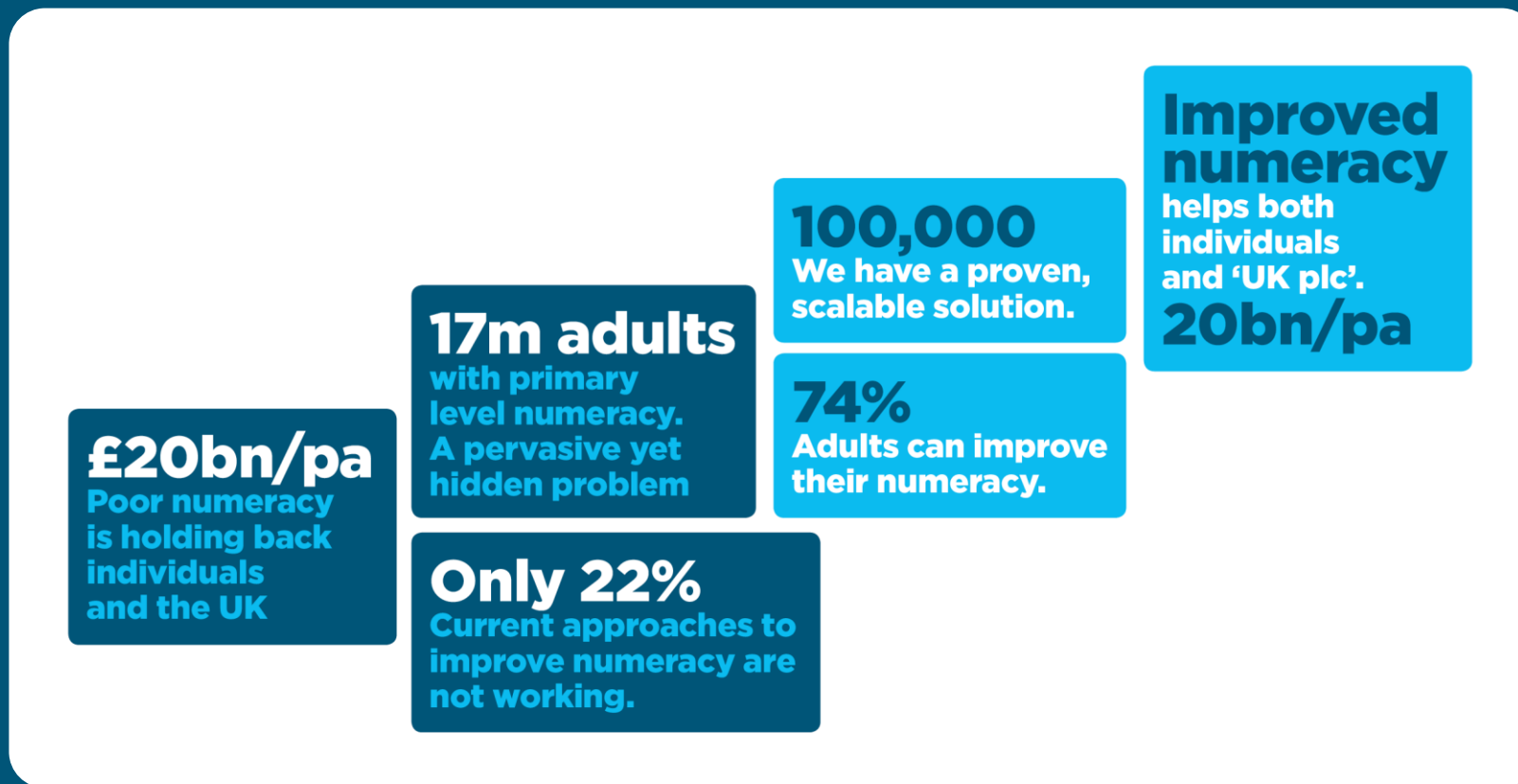
Chief Economist, Bank of England
& Trustee, National Numeracy

Rachel Hopcroft

Head of Corporate Affairs, KPMG

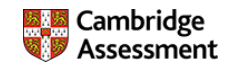
Mike Ellicock

Chief Executive, National Numeracy



Lynne McClure, Director,
Cambridge Mathematics

CAMBRIDGE $\sqrt{\text{Mathematics}}$



The big picture

The framework will be:

- A connected map of mathematics from (3)-19
- Informed by research and expert opinion
- A basis for long term education strategy
- Bringing coherence* to curriculum, assessment, resources and professional development
- Developed in partnership with knowledgeable others

*Schmidt 2005, Oates 2015

Design principles

- Connectedness
- Early exposure in advance of formal learning
- Affordances of digital technology
- Inclusion

Partnership with NN

- Similar issues, different populations
- High GCSE failure, low everyday utility
- Starting from the tasks, not the maths
- Mapping onto statutory assessments
- Designing progressions, talking to policy makers

CAMBRIDGE $\sqrt{\text{Mathematics}}$

Cambridge Mathematics
1 Hills Road, Cambridge
United Kingdom
CB1 2EU



info@cambridgemaths.org



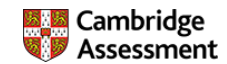
[@CambridgeMaths](https://twitter.com/CambridgeMaths)



[LinkedIn](#)



cambridgemaths.org



The Essentials of Numeracy Launch

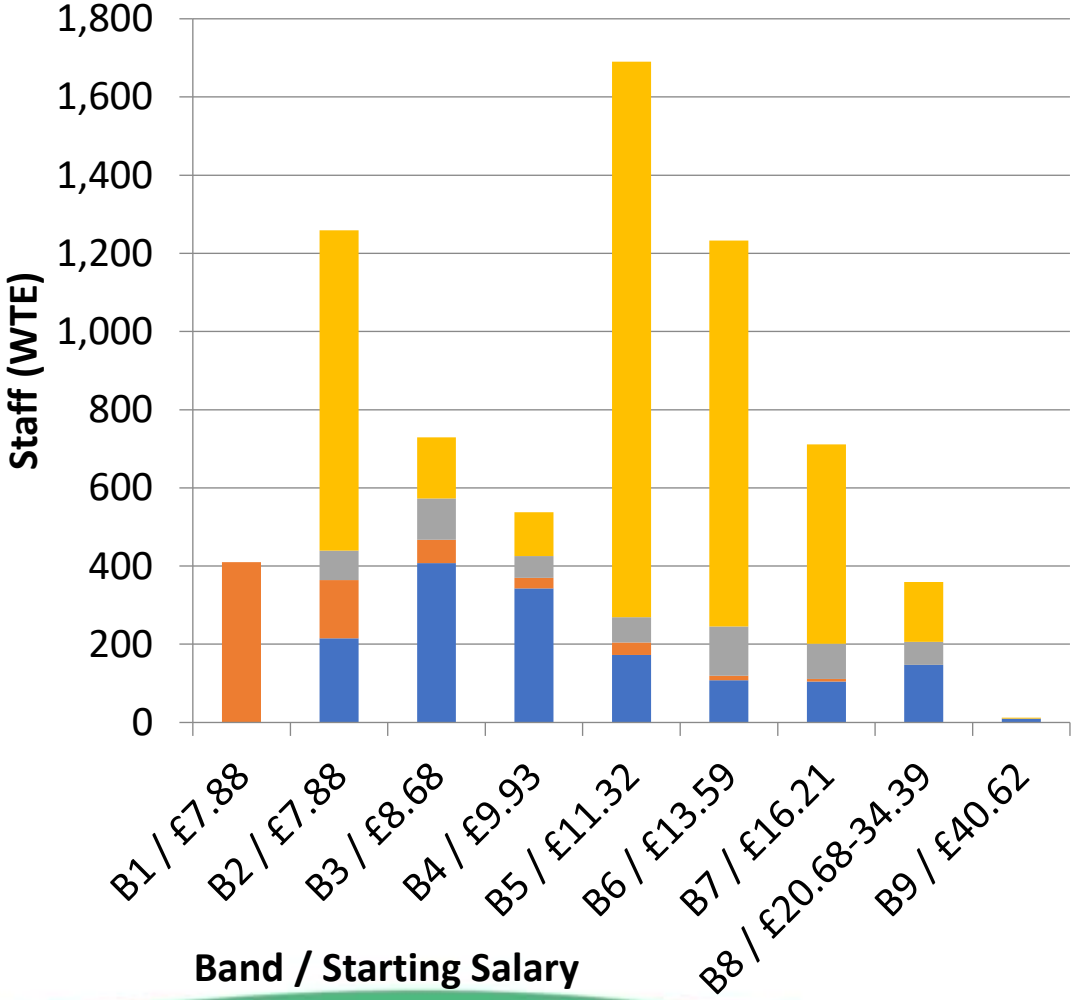
11th July 2017

Nick Groves

Associate Director /

Workforce Transformation Programme Lead

Workforce Profile (Agenda for Change)



- 8,150 WTEs
- 85% on Agenda for Change
- 20% workforce 'entry level' roles (Band 1-2)
- 36% workforce < Band 5 (ie. Level 6 qualification)

- Nursing/Care/Allied Professions
- Scientific & Technical
- Estates & Facilities
- Admin. & Clerical

Source:
BSUH ESR, 2018/18 M02

Challenges & Opportunities

Opportunity

- Patient safety
- Staff safety
- Career progression
 - Individual benefit
 - Workforce sustainability - 'grow your own'
- Social Value / Public Health

Challenges

- Initiatives++
- Cost of training / priorities
- Longer-term Return on Investment
 - Shorter-term planning focus
- Motivational factors

Resources

- Value / Belief / Effort
 - Attitude assessment
 - Skills assessment (x2)
 - 'Train the trainer'
 - Online numeracy skills development
- Project management (HEE)

Partnership & Innovation

Embed

- All-staff baseline
- Target
 - 'High tech' clinical areas
 - Support Worker Care Certificate
- BSUH Apprenticeship Academy (£1.4m)
- Recruitment & Selection
 - 'Career Navigator' (HEE KSS)

Optimise

- Behavioural insights
 - Testing the 'hook' (eg. safety, career, gamification, everyday use)
- Equal Opportunities
 - Widening participation
- Numeracy Champions
- Tracking learner progress

Next Steps

- Pilot / evaluate
 - IT skills / access
 - 'Nudge' approaches
- Model for wider rollout – partnership with HEE KSS
- Business case for numeracy in health?
- ***Patient, staff, organisational, societal benefits***

'The Essentials of Numeracy'

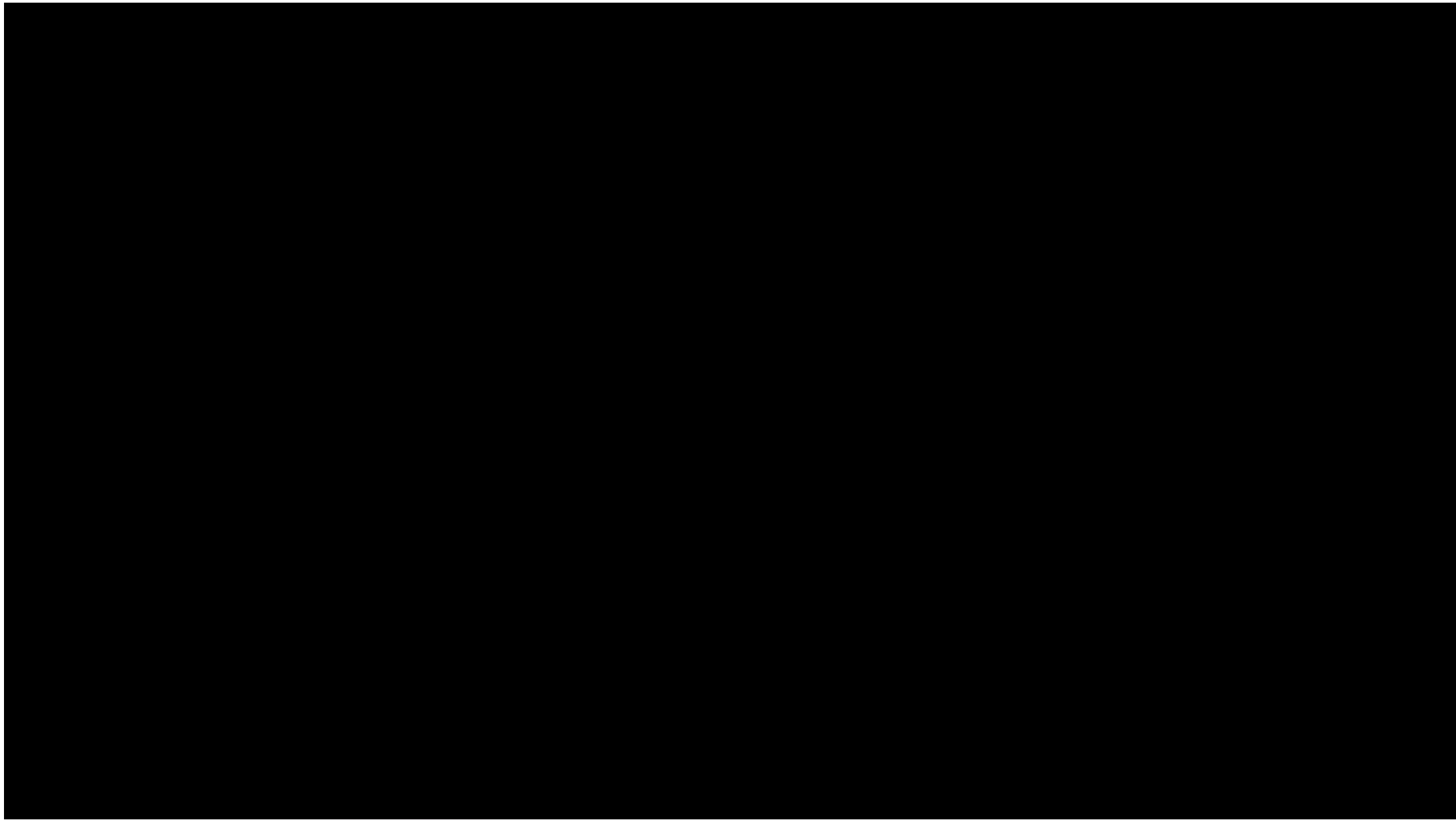


Brighton and Sussex **NHS**
University Hospitals
NHS Trust

 National Numeracy
for everyone, for life

NHS
Health Education England
Working across Kent, Surrey & Sussex







The Essentials of Numeracy

A new approach to making the UK numerate