

Bug football



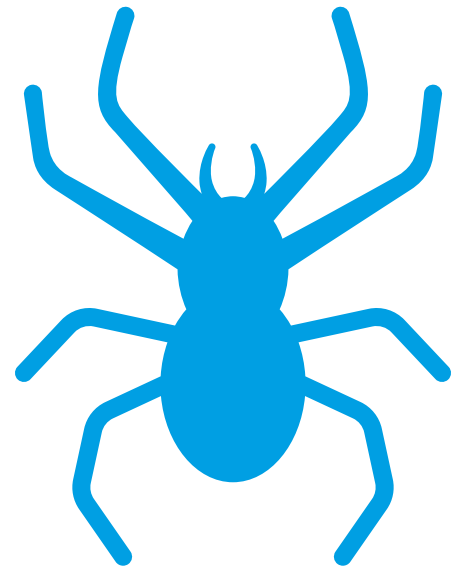
Family Maths
Toolkit

The first ever mini beast 5-a-side football tournament is being held.

There are 4 teams – beetles, spiders, woodlice and centipedes.

Beetles have 6 legs; spiders have 8 legs; woodlice have 10 legs; centipedes have 40 legs.

1. How many legs on the pitch when the beetles play the spiders?
2. How many boots do the woodlice team need?
3. Which two teams playing each other would make a total of 250 legs on the pitch?
4. How many legs altogether in the beetles team?
5. The spiders have been sponsored for new boots which cost £20 a pair – how much will this cost for the team?
6. Can you make up another bug team – how many legs in their team?
7. Your team reaches the football final and play the woodlice. How many legs on the pitch?



Family comments:

Child comments:



Curriculum Link

Using times tables facts to solve problems.

Human anatomy facts



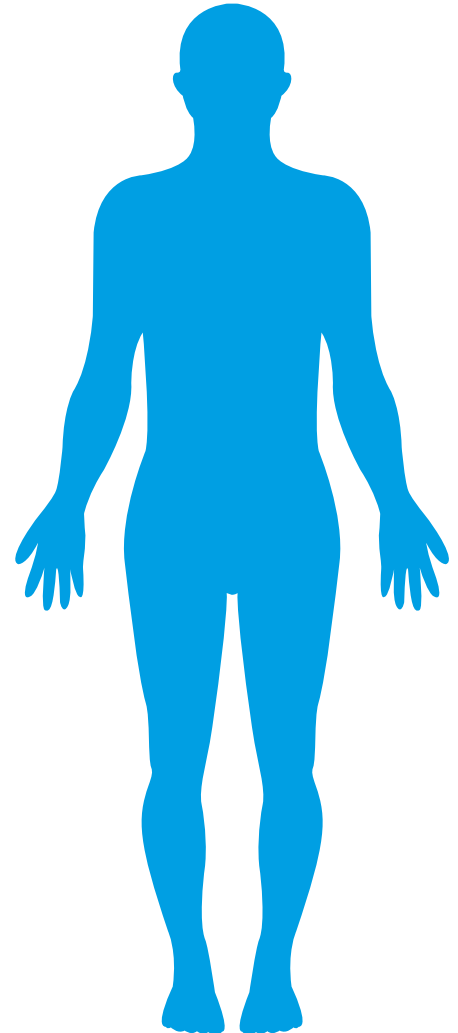
Family Maths Toolkit

Facts about humans:

- Humans' arm spans (finger-tip to finger-tip) are about the same length as their height.
- There are about 8 head-lengths to a person's height.

Can you check these facts on you and your family? Is it the same for everyone?

If you have teddies, dolls or adventure figures - see if they have been made to match human shapes!



Family comments:

Child comments:



Curriculum Link

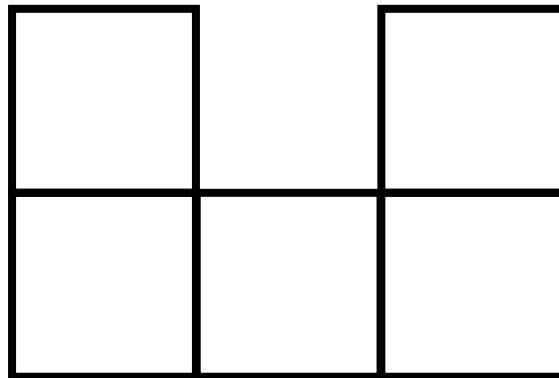
.....
Measure and compare lengths (m, cm, mm); interpret and present data.

Half shape challenge



Family Maths
Toolkit

This is half a shape:



Draw some of the different shapes the original could have been.

Mark any line of symmetry on your whole shape.

Design another half shape for someone else to finish
- do not make it too complicated! Try it out first!

Family comments:

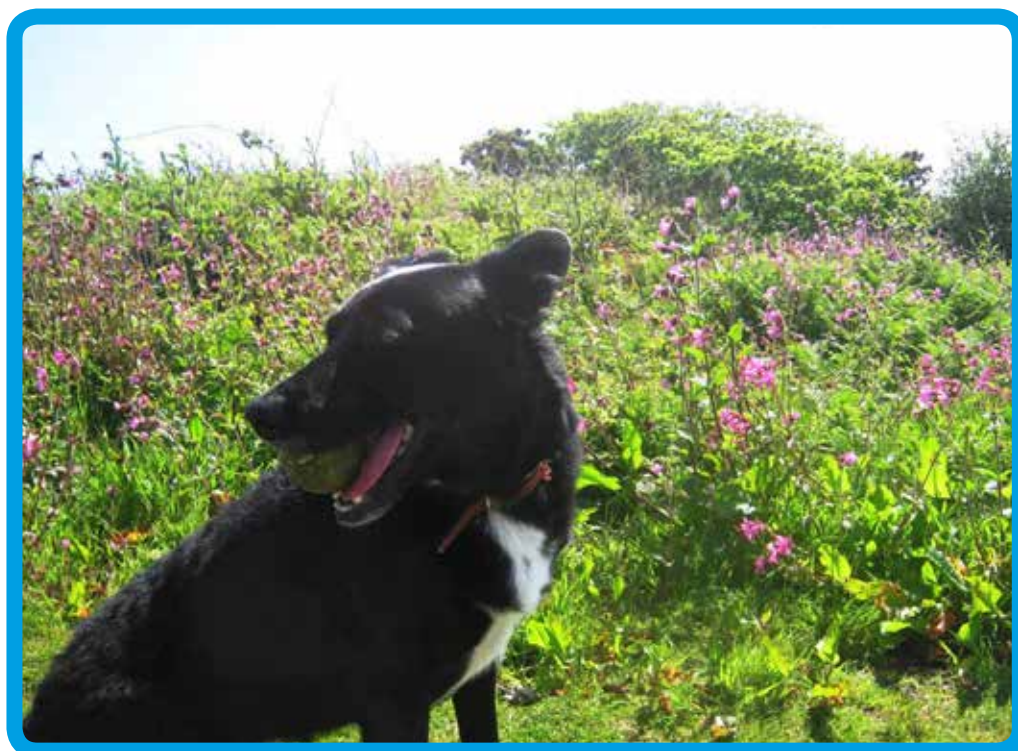
Child comments:



Curriculum Link

Extending knowledge of shape; symmetrical and non-symmetrical polygons.

Paddy is a large dog and needs vaccinations, flea treatment, worming and insurance – how much will this visit to the vet's cost?



At the vets	Microchip	Vaccination	Flea treatment	Wormer	Neutering	Insurance
Large dog	£35.00	£26.00	£7.60	£14.00	£400.00	£120.00
Small dog	£35.00	£15.00	£7.60	£7.00	£150.00	£120.00



His friend Monty is a small puppy – he needs everything – will his visit cost more than Paddy’s?



A dog needs to be flea treated every 3 months. How much will it cost Paddy for a year?

What else do dog owners have to pay for? Can you make a list of what a dog needs and estimate the cost (eg. lead, bowl, toys)?



Adapted from the Dogs Trust ‘Real life problems for 7-11 year olds’.

Family comments:

Child comments:



Curriculum Link

Addition of money using £; intervals of time; interpreting information presented in a table.